

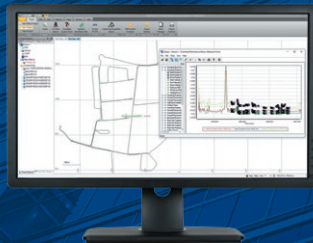
Trimble Mobile Mapping

DRIVE INNOVATION

SYSTEMS

**Trimble MX7****Trimble MX50****Trimble MX9**

SOFTWARE

**TMI Field Software****Applanix POSpac****Trimble Business Center****Trimble MX**




Take control of the way you work

Whatever your project or budget, Trimble's complete portfolio of mobile mapping solutions gives you a choice to meet your needs. At Trimble, we focus on the complete system and workflow, with complementary software products that are common across the portfolio. Whether your interest is in capturing immersive imagery to create a mapping based street view application or you are looking to undertake precise survey and engineering projects, Trimble has a mobile mapping solution waiting to be discovered.

Trimble Mobile Mapping

DRIVE INNOVATION

To help decide which mobile mapping solution is right for you, refer to the table below for a feature comparison between the Trimble MX7, MX50, and MX9.

			
	Trimble MX7	Trimble MX50	Trimble MX9 ¹
Compare			
SYSTEM SPECIFICATION			
Weight (Sensor Unit)	11.3 kg	23 kg	37 kg
IP Rating (Sensor Unit)	IP65	IP64	IP64
Operating Temperature	0 °C to +35 °C	-10 °C to +50 °C	0 °C to +40 °C
Storage	2 TByte SSD	2 TByte SSD	2x 2 TByte SSD
GNSS Azimuth Measurement System	Yes, optional	Yes, included ²	Yes, optional
DMI ³	Yes, optional	Yes, optional	Yes, optional
SPHERICAL CAMERA	Available	Available	Available
Camera Resolution	30 MP (6 x 5 MP)	30 MP (6 x 5 MP)	30 MP (6 x 5 MP)
Field of View	90% of full sphere	90% of full sphere	90% of full sphere
Focal Length	4.4 mm	4.4 mm	4.4 mm
Capture Mode	By distance or by time at 10 fps max	By distance or by time at 10 fps max	By distance or by time at 10 fps max
PLANAR CAMERA	Not Available	Not Available	2 X Side Facing Cameras, 1 X Backward/Downward Facing Camera
Camera Resolution			5 MP X each planar camera
Field of View	-	-	H: 53.1° V: 45.3°
Focal Length	-	-	8.5 mm
Capture Mode	-	-	By distance or by time at 10 fps max
LASER SCANNER	Not Available	Dual Laser System	Dual Laser System (Single Laser Option is Available)
Effective Measurement Rate	-	320 kHz; 960 kHz	600 kHz; 1MHz; 1.5 MHz; 2 MHz
Field of View	-	360°	360°
Scan Speed	-	240 scan/sec	500 scan/sec
Laser Precision	-	2.5 mm @ 30 m	5 mm
Laser Range Accuracy	-	2 mm	3 mm

Trimble Mobile Mapping

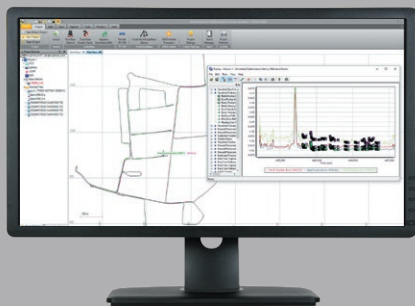
DRIVE INNOVATION

					
	Trimble MX7	Trimble MX50		Trimble MX9 ⁱ	
Compare					
Maximum Range, Target Reflectivity > 80%	-	80 m		420 m ⁴	
Minimum Range	-	0.6 m		1.2 m	
Maximum Number of Targets per Pulse	-	1		Unlimited	
EMBEDDED TRIMBLE GNSS-INERTIAL SYSTEM	AP15	AP20	AP60	AP40	AP60
ACCURACY—NO GNSS OUTAGES (POST PROCESSED) ⁵					
X, Y Position (m)	0.020	0.020	0.020	0.020	0.020
Z Position (m)	0.050	0.050	0.050	0.050	0.050
Velocity (m/s)	0.015	0.005	0.005	0.005	0.005
Roll and Pitch (deg)	0.025	0.015	0.005	0.015	0.005
Heading (deg) ⁶	0.060	0.025	0.015	0.020	0.015
ACCURACY—60 SECOND GNSS OUTAGE (POST PROCESSED) ⁵					
X, Y Position (m)	0.800	0.320	0.100	0.120	0.100
Z Position (m)	0.200	0.130	0.070	0.100	0.070
Roll and Pitch (deg)	0.050	0.020	0.005	0.020	0.005
Heading (deg) ⁶	0.200	0.030	0.015	0.020	0.015
FIELD SOFTWARE	Available	Available		Available	
Trimble Mobile Imaging (TMI) Software	TMI, browser-based, no installation necessary	TMI, browser-based, no installation necessary		TMI, browser-based, no installation necessary	

1 Table contains parameters that describe Trimble MX9 Dual Head system.
2 Included in a standard Trimble MX50, Dual, AP20, Spherical+. For Trimble MX50, Dual, AP60, Spherical+ GAMS is available as an option.
3 One sigma values, with DMI option, post-processed using base station data.
4 Typical performance. Actual results are dependent upon satellite configuration, atmospheric conditions and other environmental effects.
5 At effective measurement rate 300kHz.
6 With DMI option.
7 With GAMS option, 2 m baseline.

Trimble Mobile Mapping

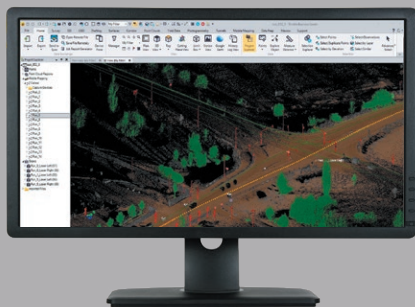
DRIVE INNOVATION



APPLANIX POSPAC MOBILE MAPPING SUITE

Industry-leading software for direct georeferencing of mobile mapping sensors using GNSS and inertial technology.

- ▶ Process Mobile Mapping trajectory



TRIMBLE BUSINESS CENTER SOFTWARE SUITE

The industry's leading survey software.

- ▶ Field-to-finish survey software
- ▶ Process point cloud and imagery
- ▶ Register LiDAR data to GCPs
- ▶ Extract automatically classified point cloud
- ▶ Build roadway/corridor sections
- ▶ Create CAD drawings



TRIMBLE MX SOFTWARE SUITE

The industry's leading solution for feature Extraction and data sharing.

- ▶ Process limitless sizes of mobile mapping data
- ▶ Extract massive amount of data with ease
- ▶ Create data schemas inside of TMX or populate existing data schemas
- ▶ Attribute features using embedded formulas or create your own formula
- ▶ Share mobile mapping data via web
- ▶ Connect to popular GIS and CAD system using TMX Publisher Plugins

Learn more: geospatial.trimble.com/mobile-mapping

Contact your local Authorized Trimble Distribution Partner for more information

NORTH AMERICA
Trimble Inc.
10368 Westmoor Drive
Westminster CO 80021
USA

EUROPE
Trimble Germany GmbH
Am Prime Parc 11
65479 Raunheim
GERMANY

ASIA-PACIFIC
Trimble Navigation
Singapore PTE Limited
3 HarbourFront Place
#13-02 HarbourFront Tower Two
Singapore 099254
SINGAPORE