

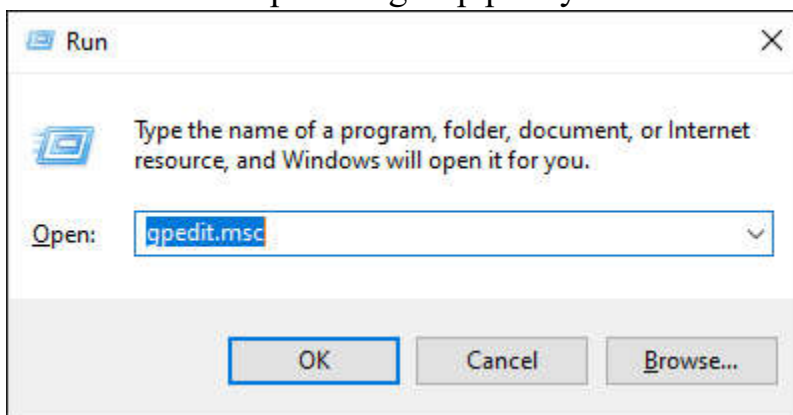
Setting a Windows Update Group Policy on the TSC7

Trimble produces their own customized version of Windows that includes the drivers needed in newer devices. It is good policy to stop the Windows Creator Build updates until they produce a new operating system that coincides with each version of the Windows creator build. For instance, the 1903 creator build coincides with Trimble's B27-T OS version. In the same manner, so the entire operating system doesn't need to be replaced, Trimble produces an App and Driver package that can be run post update to the latest Windows Creator Build.

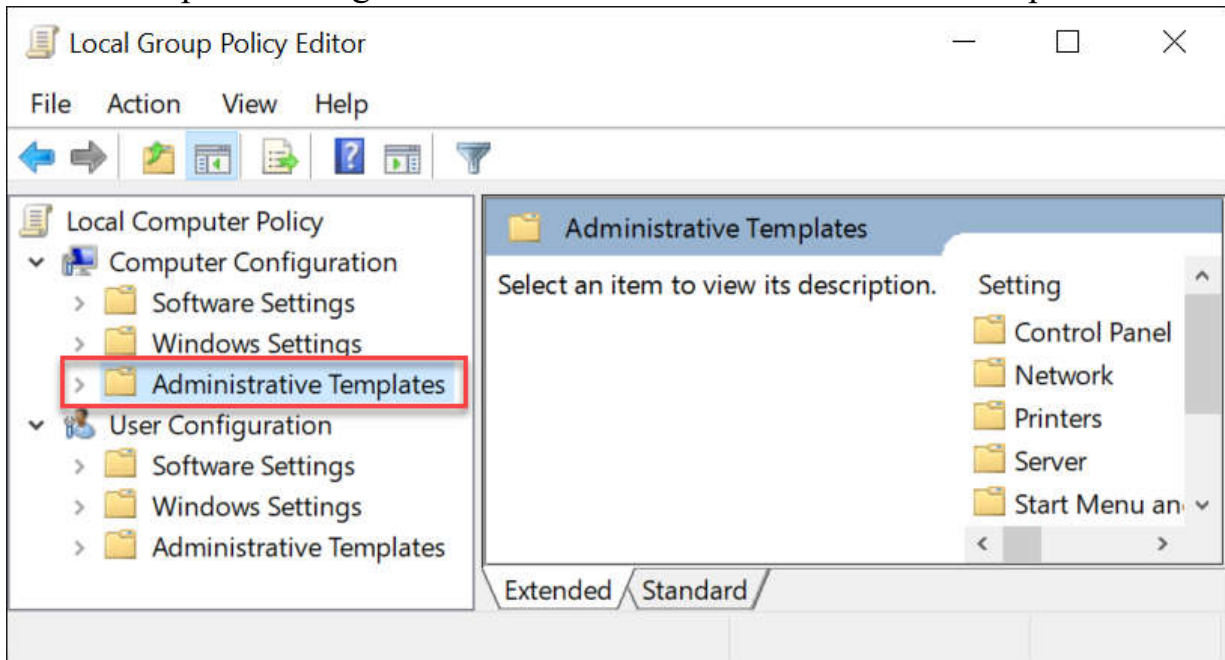
Since the TSC7 (and other new Windows based devices) comes with Windows 10 Pro, you can make group policy changes to stop big updates. This will not hinder security updates but will notify the user that updates are available. In the past, Microsoft worked in a similar fashion, but with the advent of Windows 10 they eliminated the choice of whether to apply updates.

To set the group policy stopping the Creator Build updates, please follow these instructions:

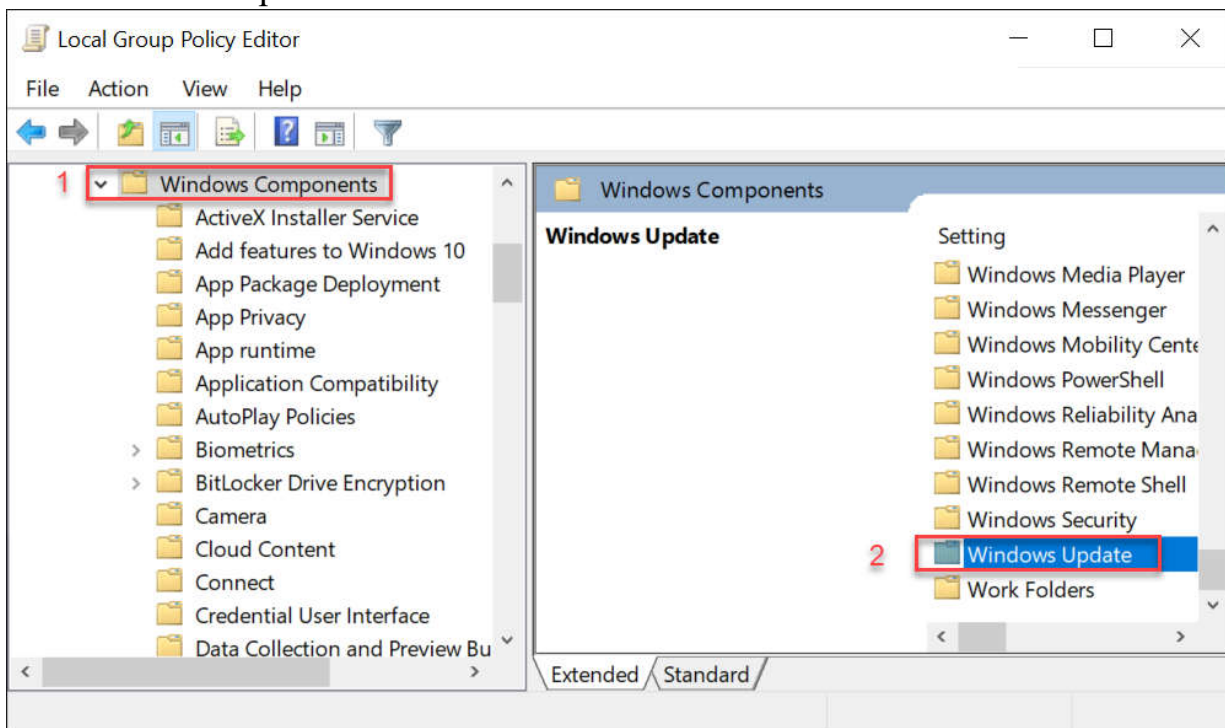
1. Press the Win+R buttons to launch the Run command. Type "gpedit.msc" and hit enter. This will open the group policy editor.



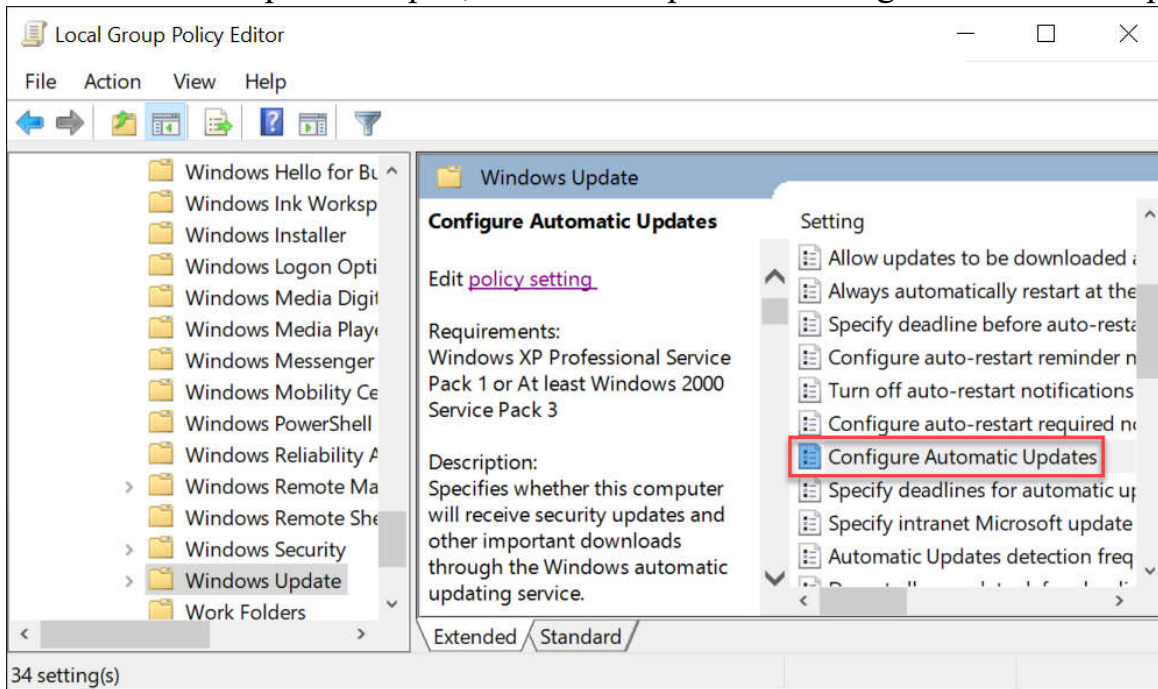
2. Under Computer Configuration there will be an Administrative Templates folder.



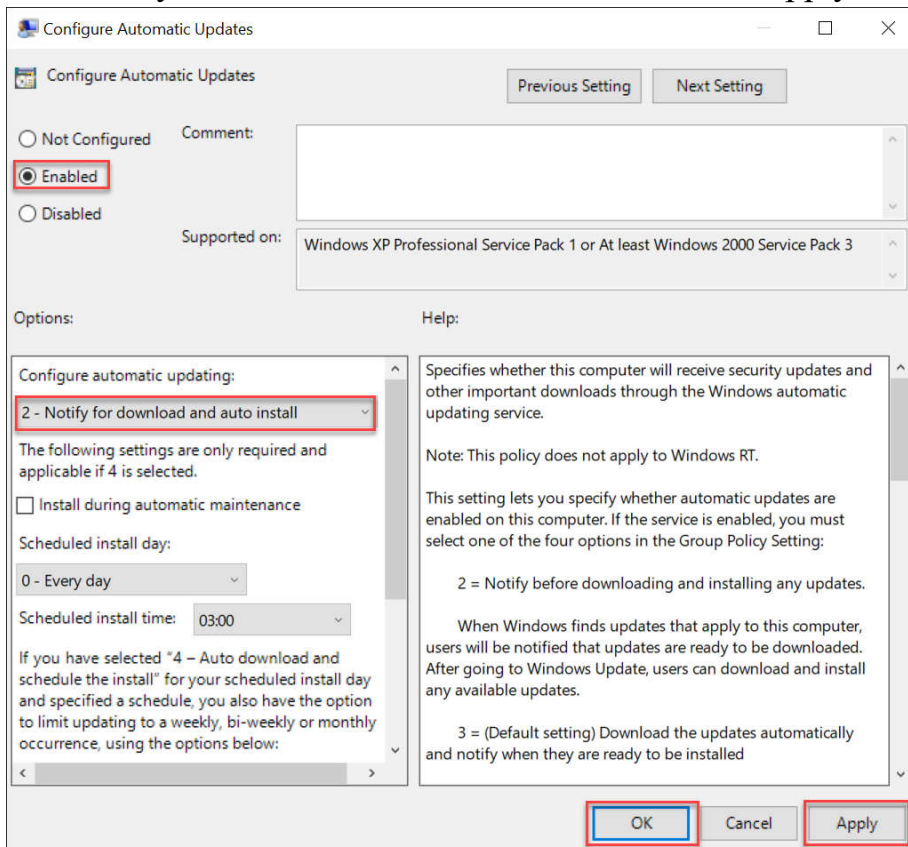
3. Inside of the Administrative Templates folder, select Windows Components and then Windows Update.



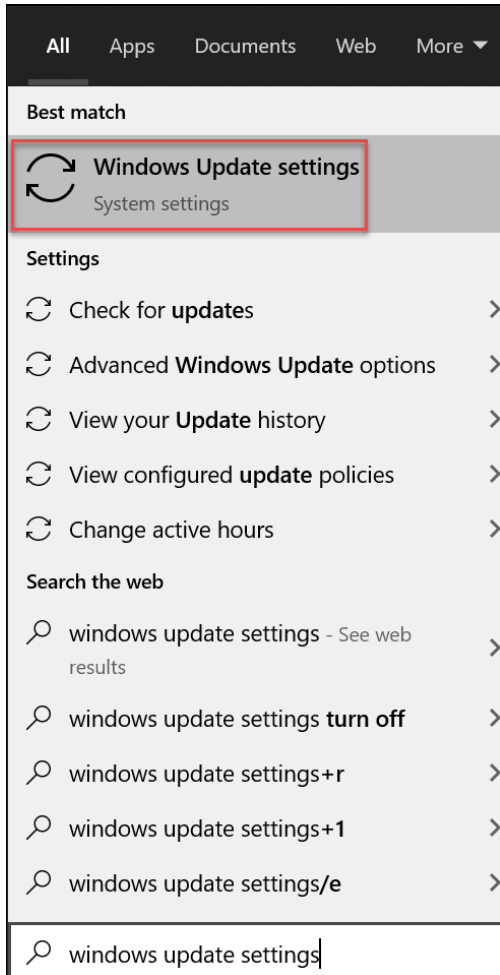
4. Once Windows update is open, choose the option to Configure Automatic Updates



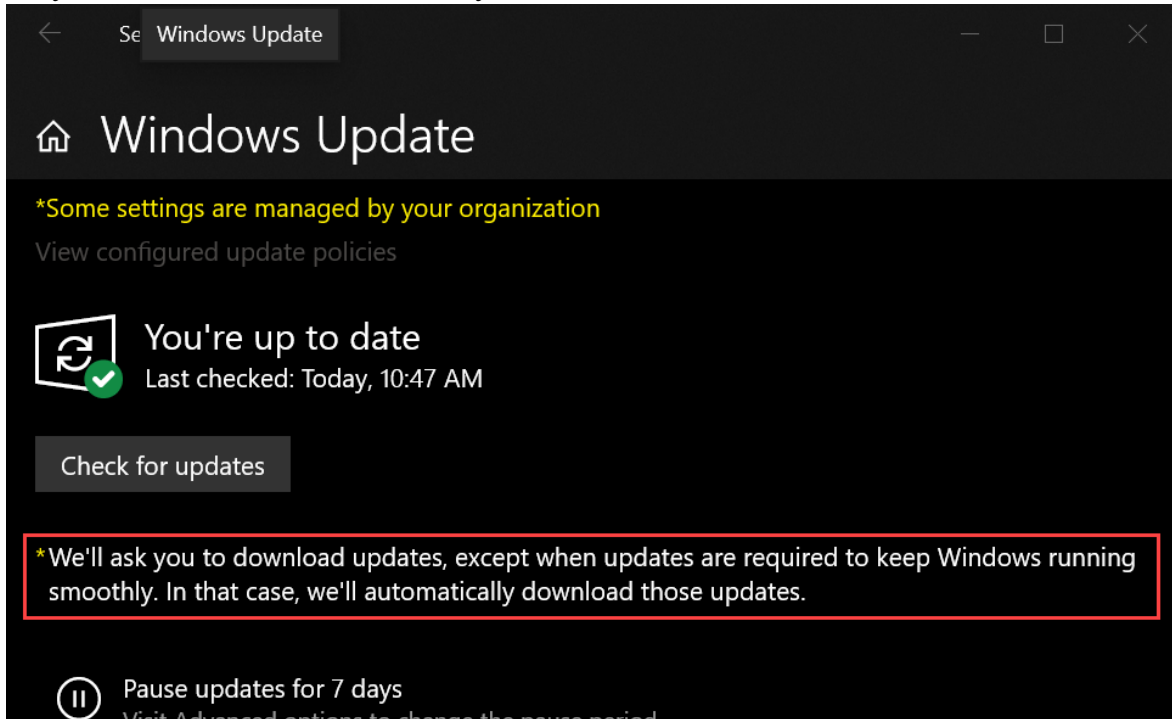
5. Select the circle for Enabled and under Configure automatic updating, choose: "2 – Notify for download and auto install" and hit Apply and OK.



- Restart the TSC7 to finish the Group Policy update
- Hit the Windows key and type Windows update



8. Check for updates. Now, you will be notified by windows if it finds updates, but they should not be automatically downloaded or installed.



9. Now that this is done, check with AllTerra Central Tech Support to see if there are issues with the updates before you update to the next Windows Creator Build version. This will keep your TSC7 running smoothly and without interruption.