



## Terrasync Basic Point Collection

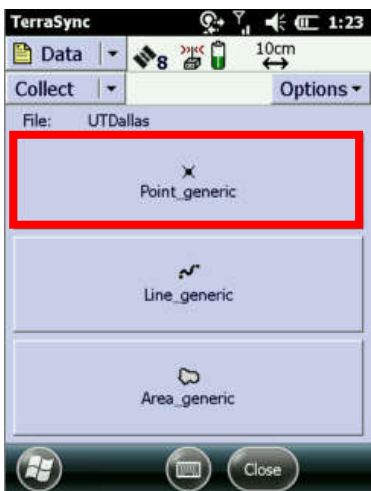
1. Power on Trimble GNSS device.
2. Open Terrasync software. It will open to the “Status” window and should automatically connect\*\*\* to the GNSS receiver and start tracking satellites. Once the   icons solidify and coordinates are displayed below the Sky plot, you are ready to collect a point.
3. Navigate to the “Data” page using the drop-down menus at the top left of the screen



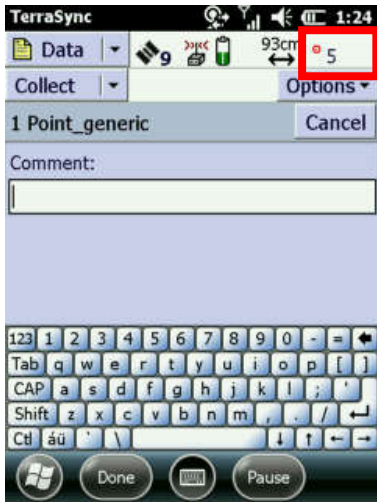
4. Name your file, and hit “Create” at the bottom of the screen. Confirm the Antenna Height when prompted.

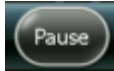
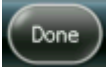


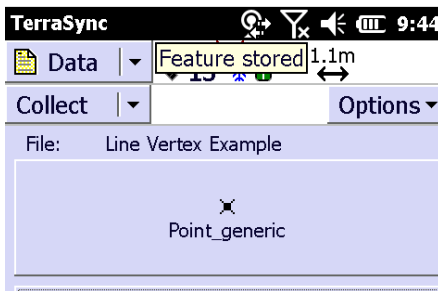
5. You are now in the data collection screen. When you have positioned the Geo7X over the intended point to be collected, tap the “Point\_generic” button to begin collecting positional data.



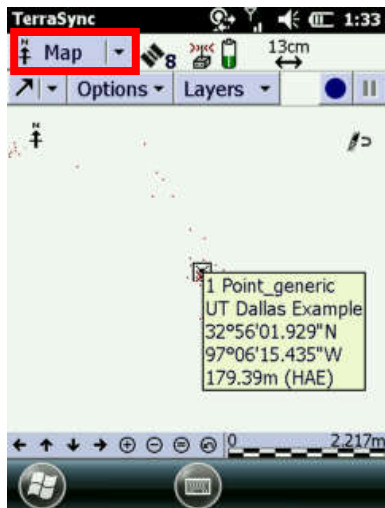
- The unit will automatically start logging positions for the point feature. Take notice of the icon in the upper right hand corner tracking how many points have been logged. Log the desired number of positions(5-10) to be averaged.



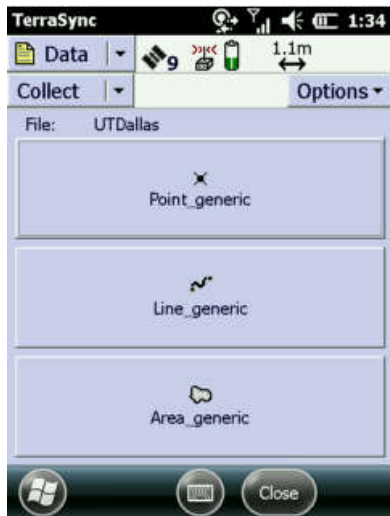
- If you wish to enter a comment, tap the  button near the bottom of the screen to pause the unit from logging positions. Enter your comment and tap the  button to store the feature.
- “Feature stored” will briefly display.




9. You can now navigate over to the “Map” screen to view your point using the drop-down menu in the top left corner.



10. Once you are done collecting points, make sure to “Close” your file before powering down. You risk corruption of the file if this step is not completed.



\*\*\*If the unit does not automatically connect in Step 3, navigate to the “Setup” window and ensure you are connected to the GNSS receiver by tapping the  in the upper right-hand corner\*\*\*